

## Lasetnet 10 Meta Input Port Retains Lasetnet 9 Settings

Adam McStravick - 2022-10-13 - Comments (0) - Lasetnet General Information

# Lasetnet

This article applies to users upgrading from Lasetnet 9 (or earlier) to Lasetnet 10, both on the same server and with Meta Ports.

Lasetnet 10 has increased security, with some Lasetnet Printer Port settings effected. Therefore, manual steps are necessary to ensure 100% compatibility.

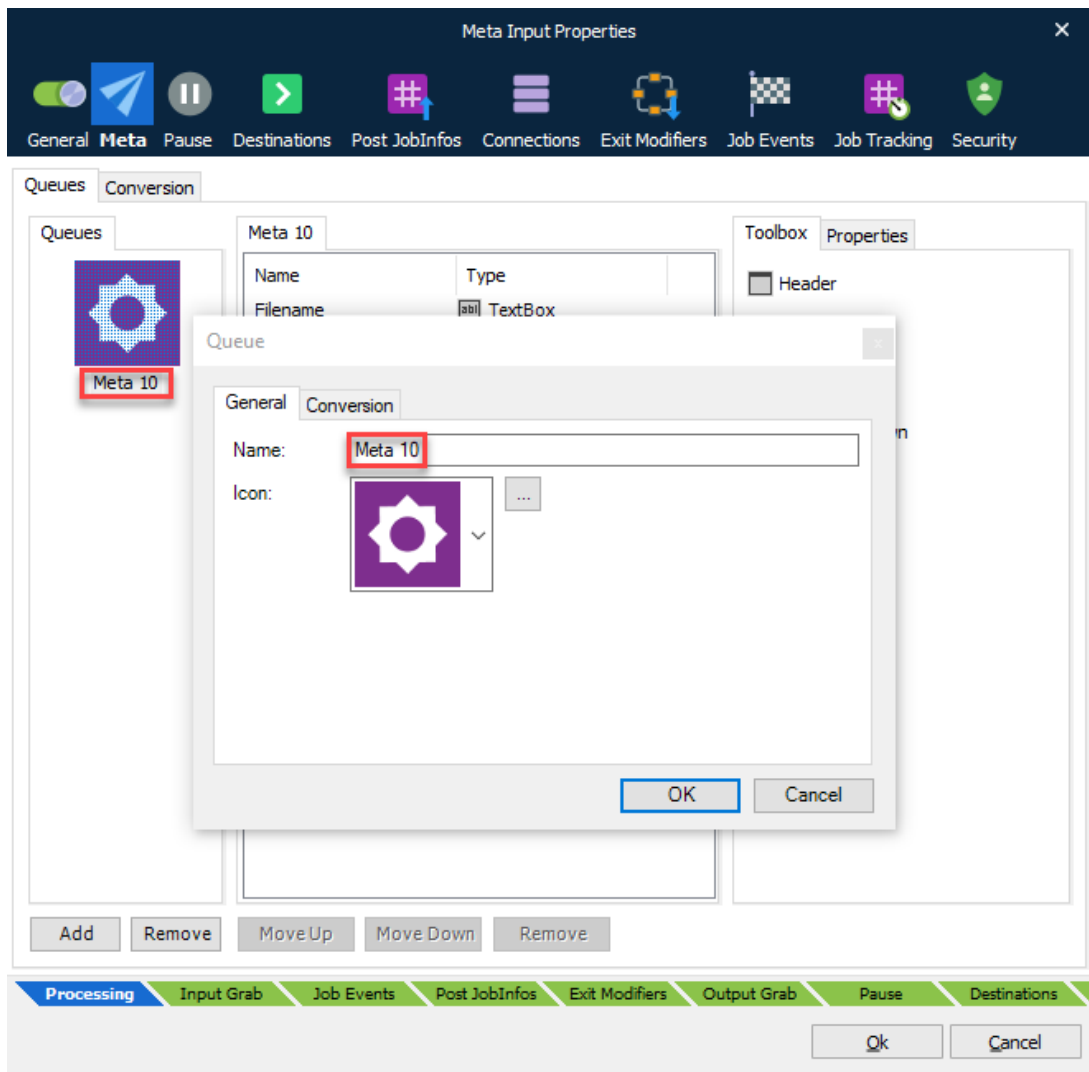
We recommend that you follow the steps in this article to ensure Lasetnet Meta input port settings are applied and function as expected.

Additional steps

### **Lasetnet Developer**

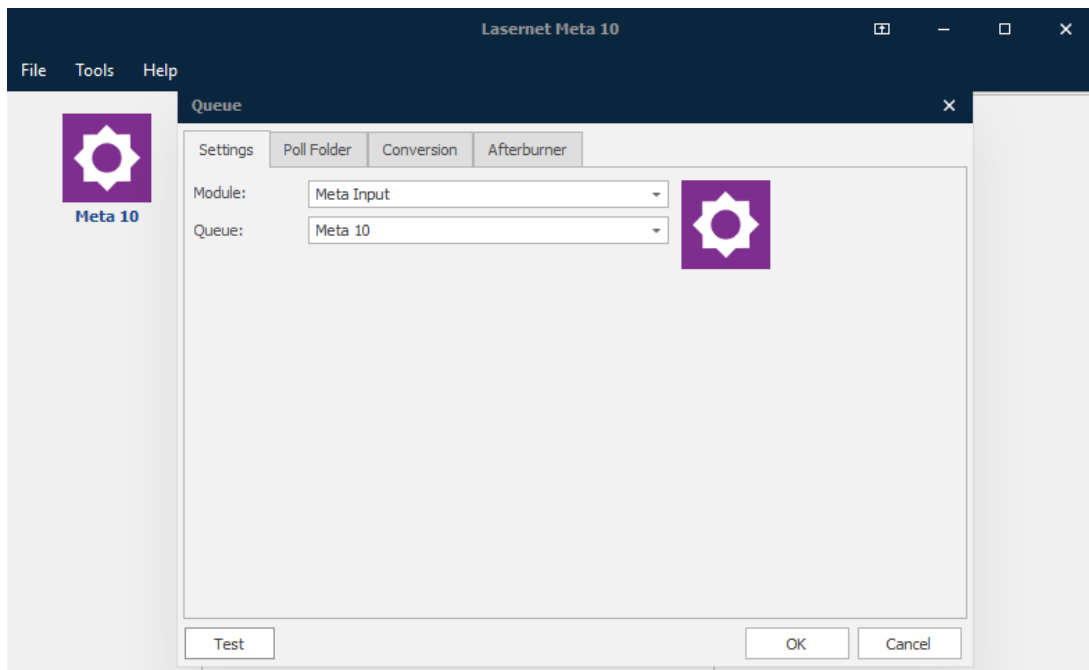
1. Export Configuration from Lasetnet 9.
2. Stop Lasetnet 9 Service.
3. Stop Lasetnet Meta Proxy 9 Service.
4. Start Lasetnet 10 Service.
5. Start Lasetnet Meta Proxy 10 Service.
6. Import Configuration to Lasetnet 10.
7. Type 10 as a suffix for any Printer Input module in Lasetnet 10. For example, change LasetnetInput to LasetnetInput10.
8. Deploy Configuration





## Lasernet Meta

- Start Lasernet Meta 10 and right-click in the queue list to add a new meta queue. It creates a new Windows printer queue and printer port with a new Port URL that matches that of the Lasernet Meta 10 application



## Windows Printers and scanners

- Start the Printers and scanners application and delete the old printer meta queues previously attached to Lasernet Meta 9

Tags  
Meta  
Port  
Printer Ports