

How to use basic charts in Lاسernet

Ivana Dordevic - 2021-08-25 - Comments (0) - Lاسernet General Information

Lاسernet

It may be beneficial or necessary to output a graphical representation of your data in the form of a chart or graph. This is commonly plotted out using bar, line or pie formats depending on what type of data is being presented.

There are ten main types of charts available as of version 8:

- Area
- Bar
- Donut
- Line
- Pareto
- Pie
- Spline
- Stacked Bar
- StepLine
- Trend
- Bar + Line

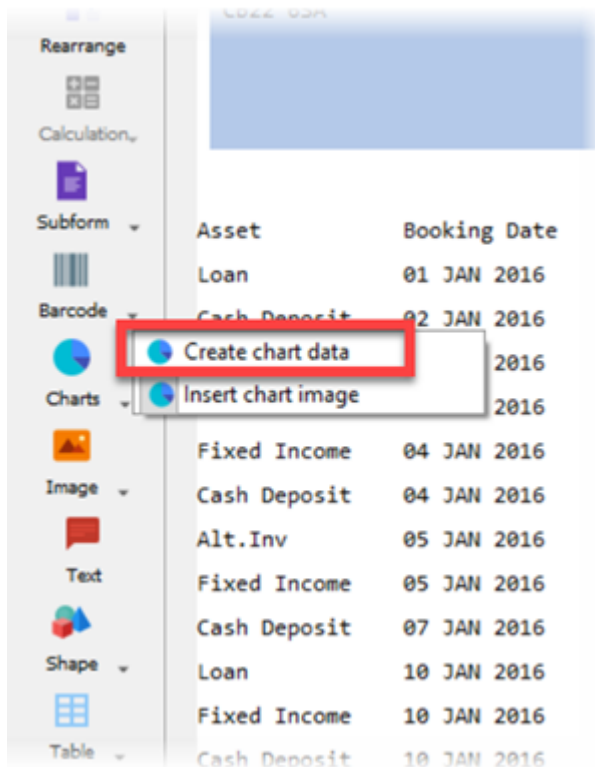
You will need to define the chart data and formatting the chart output.

You will have to choose the data carefully as not all of it will be suitable for a chart.

Capture Chart Data

To define the chart data, follow these steps:

1. Click the **Charts** tool and select **Create chart data**. The pointer will become a cross and then you can define the chart data.



2. Select the data you wish to use on the Workspace and double-click the selection to display the *Edit Chart Data* window. In the example below, data is displayed in dark green.

```

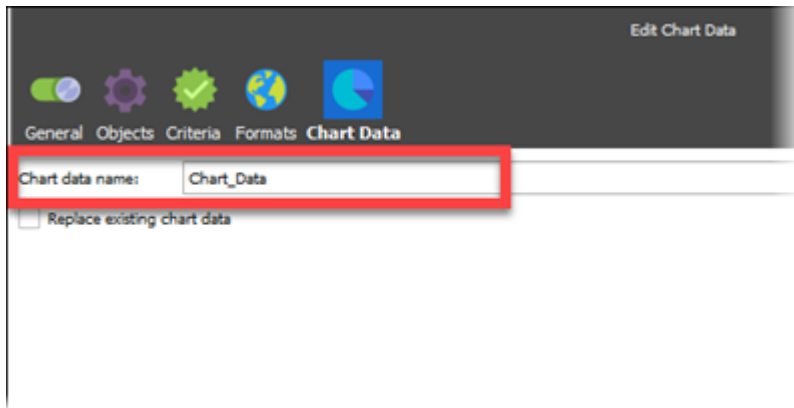
<Line>
  <Name>NOK</Name>
  <Value>4,100,000.00</Value>
</Line>
<Line>
  <Name>CHF</Name>
  <Value>-2,300,000.00</Value>
</Line>
<Line>
  <Name>USD</Name>
  <Value>10,000.00</Value>
</Line>
<Line>
  <Name>EUR</Name>
  <Value>0</Value>
</Line>
<Line>
  <Name>GBP</Name>
  <Value>0</Value>

```

You have to define all the data sets required by the chart type. For example, label data is required for all chart types; XTitle and YTitle data is only required for xy-charts.

In this example, we will create a **bar** graph. This means we will need the Chart Data and Label Data.

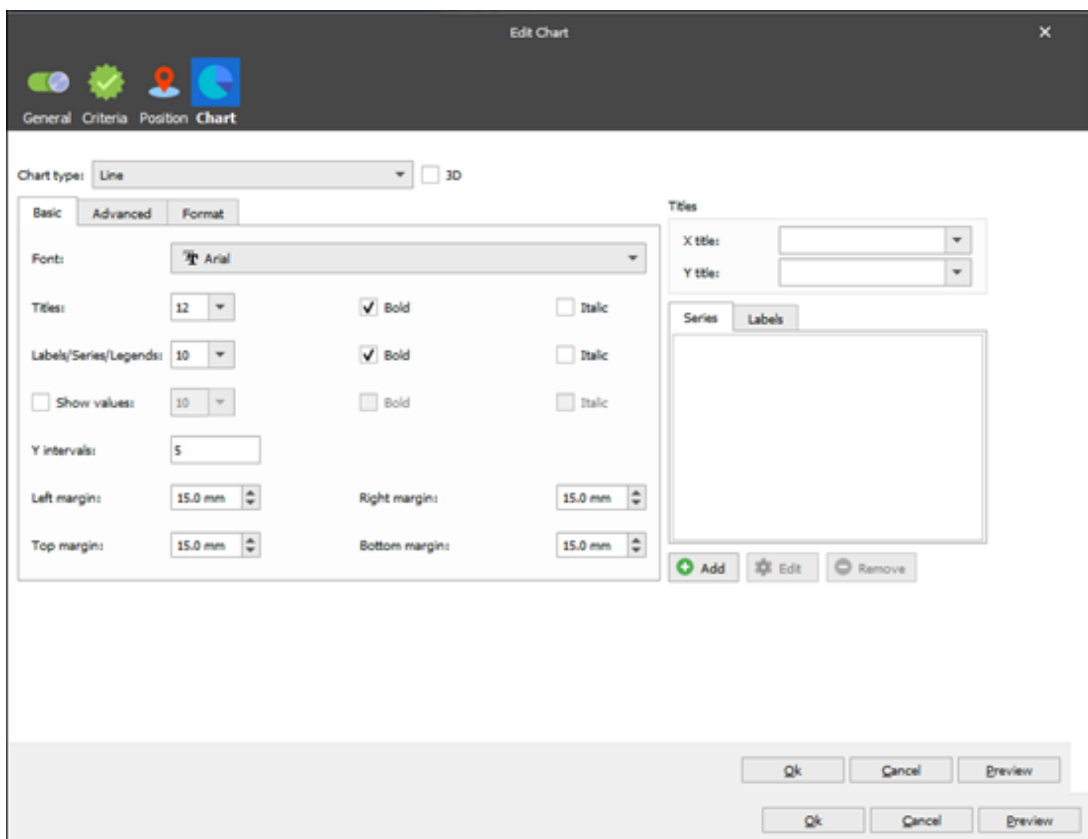
3. Click the **Chart Data** tab, enter a name in the **Chart data name** field and click **Ok**.



Creating chart image

Now we have some data we will create a chart image. Follow these steps:

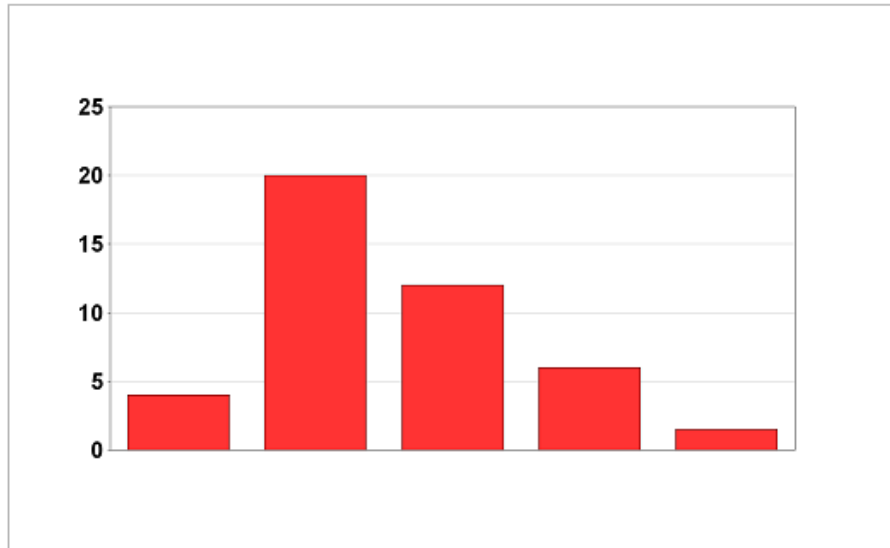
1. Click **Insert chart image** on the Toolbar and then click on the Workspace output area in the Form Editor to open the *Edit Chart* window.



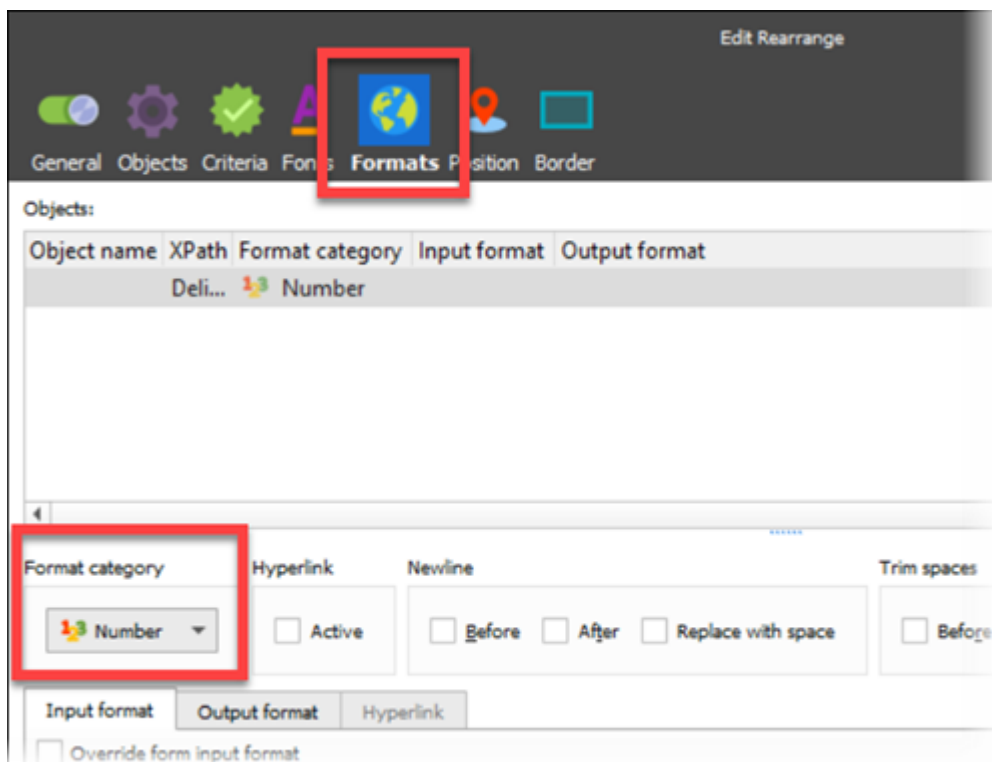
2. Change the Chart type field value to **bar**.
3. Click the **Series** tab, click **Add** and select the chart name you created earlier from the

Series values drop-down.

We can now see the output as a bar graph. Next, we need to add labels, some comparable data and also format the units.

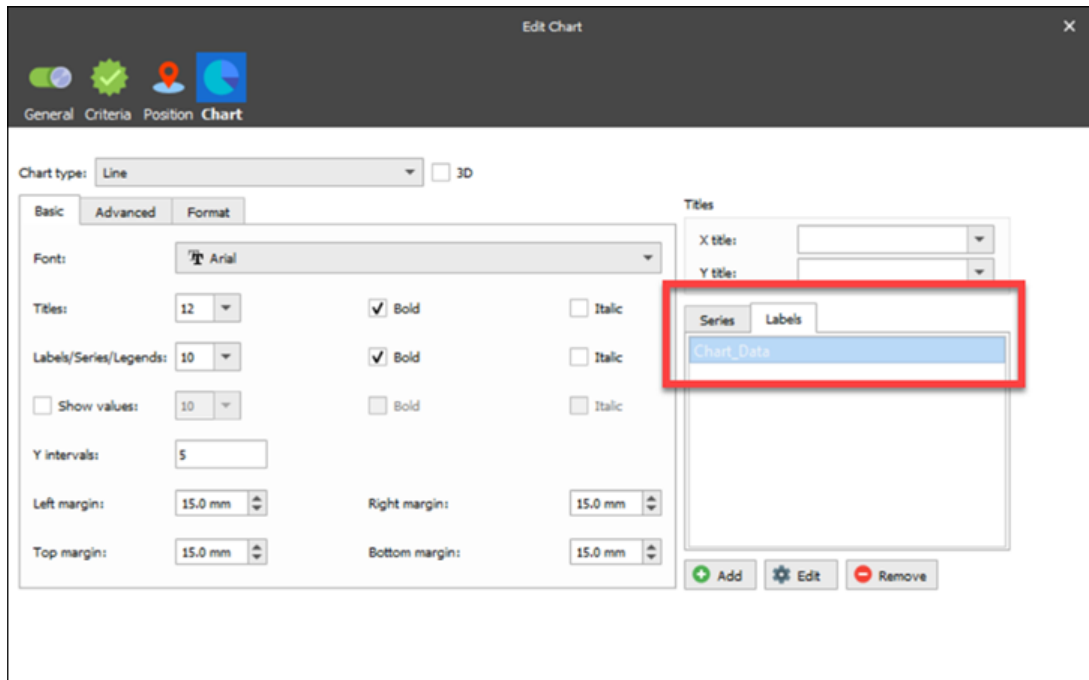


4. Double-click the defined area to display the *Edit Rearrange* window, click the **Formats** tab and then select **Number** from the drop-down menu under *Format category* (It will be *String* by default).



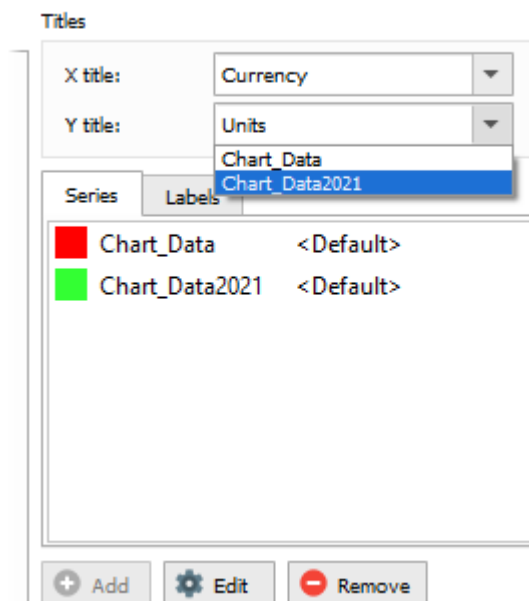
To add another data set, open the output rearrange properties again and click **Add**, then add the desired data.

We can only associate one Label set to each data set, so we only need to select the *Chart Data* name to populate the label field.

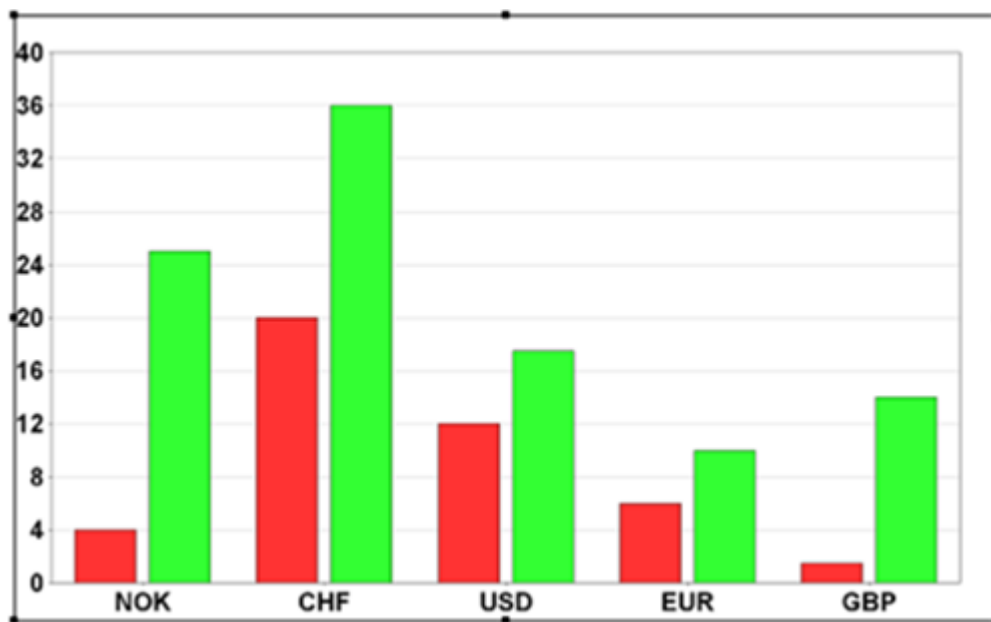


We can now define the units, add a title and axis names for better aesthetics.

For the X and Y Axis we can either hard code in a value or choose from our defined graph data. For this example, we have used a hard-coded text entry of *Units* and *Currency*.



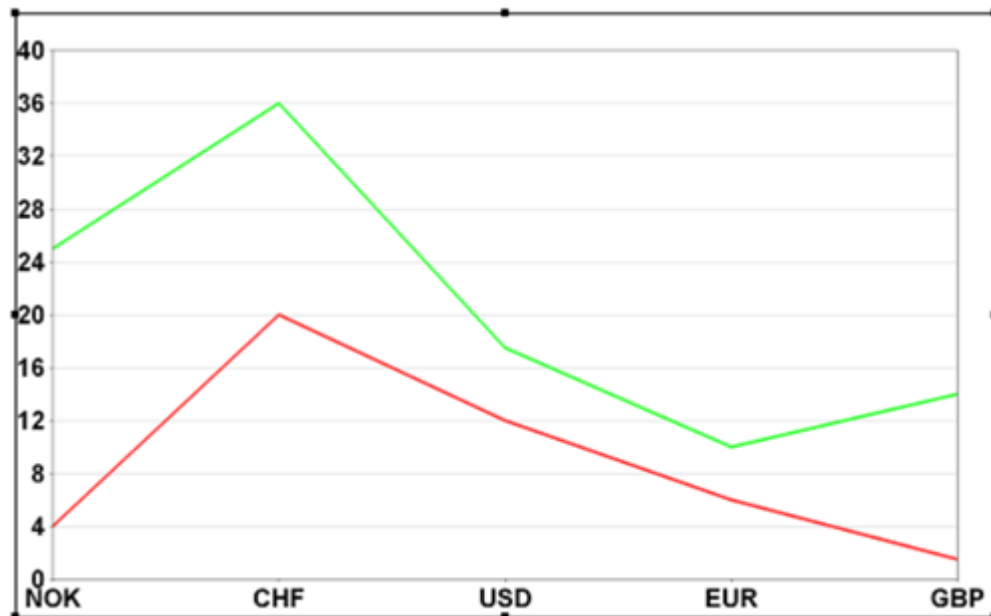
The Y intervals have been changed to 10 and we can reduce the margins to 5mm. The graph should now look as follows:



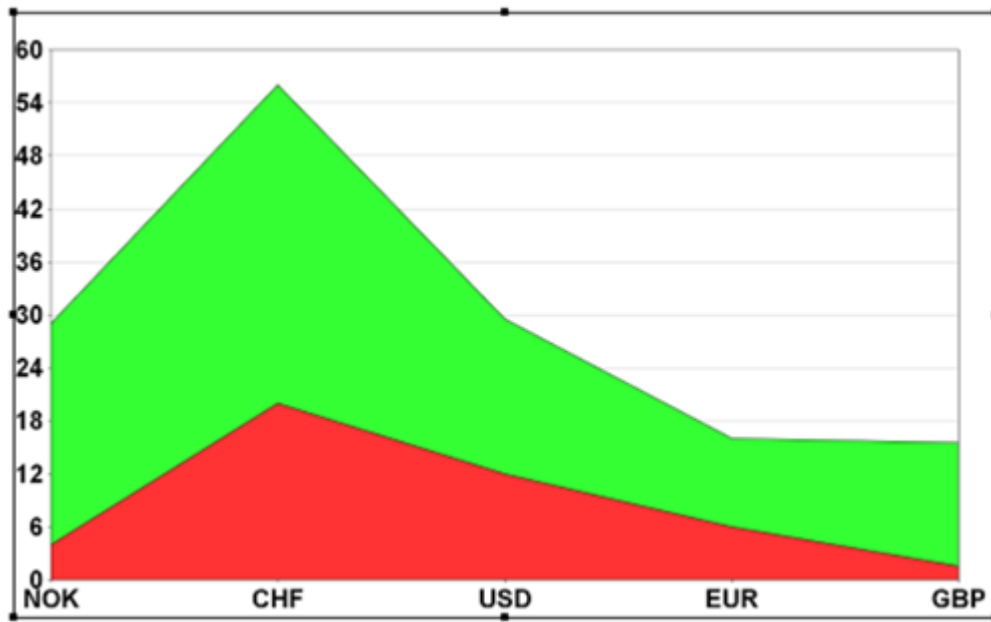
Changing the graph format

We recommend experimenting with different graph types to get a better understanding of this useful feature. Here are some example outputs which can be used by simply changing the graph type:

Line



Area



Pie

We would not recommend using this data for a *Pie chart* as it is not appropriate in its current state. As with all forms design, it is important to choose the right tool for the job.

