

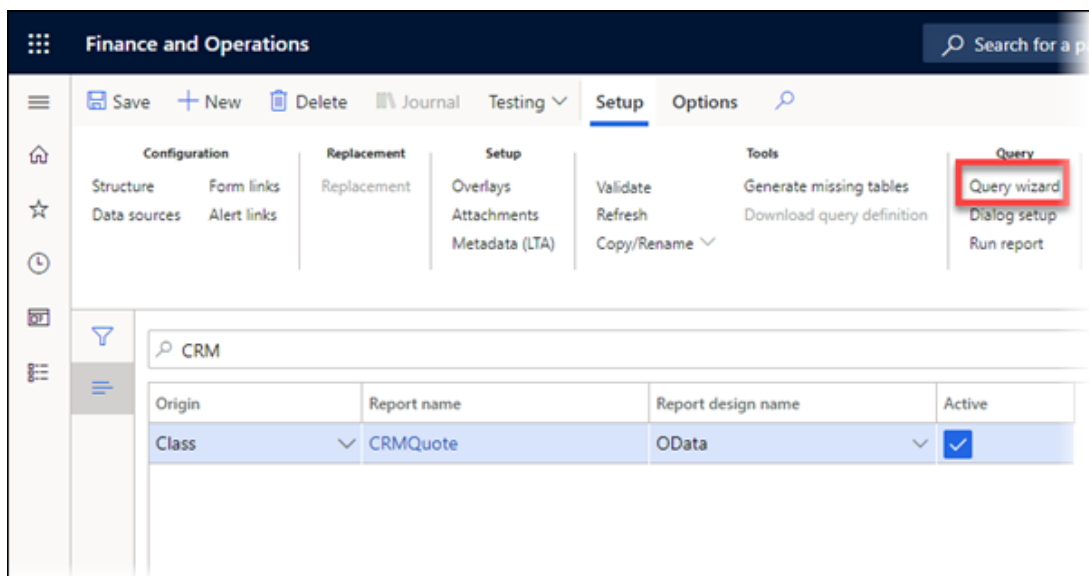
How do I specify ranges for other root data sources on a CE report?

- 2023-10-17 - Comments (0) - Lasetnet CE Connector FAQs

Lasernet for Dynamics 365

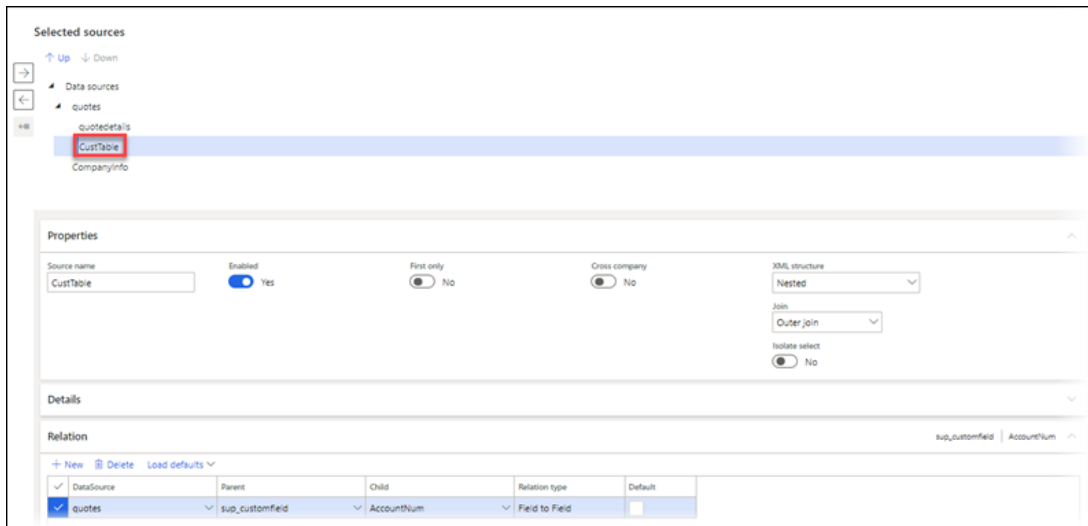
This article describes how to apply the ranges within the Query Wizard for a report - either as a relation or as a range.

Log in to the Microsoft Dynamics 365 Finance and Operations and navigate to **Lasernet** > **Reports**, then click the **Query wizard**.



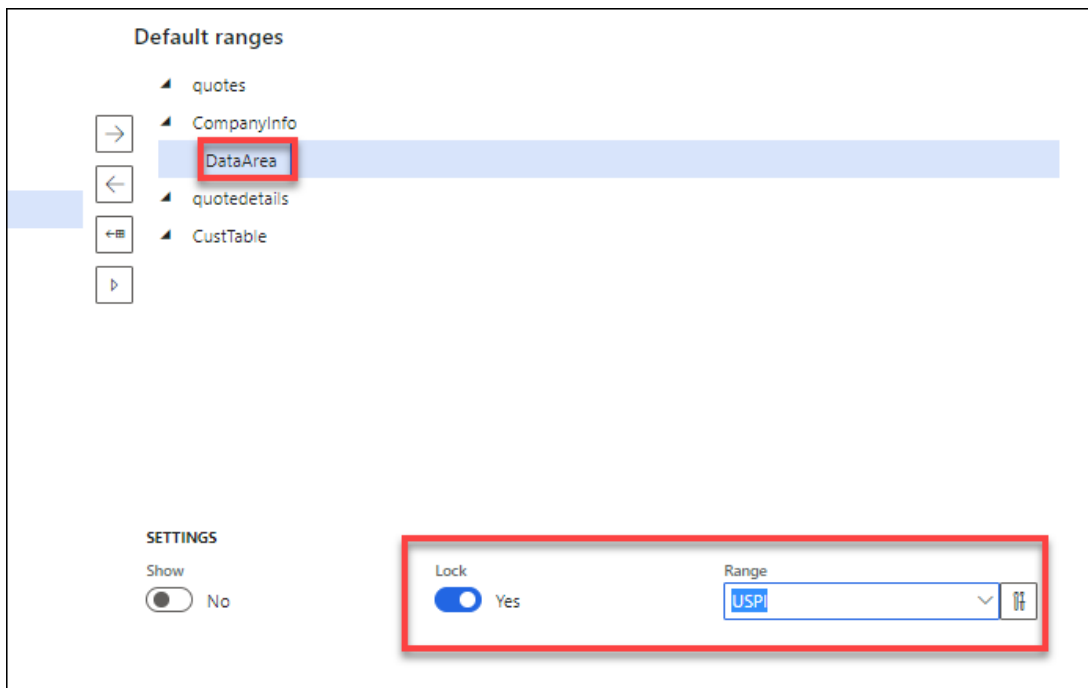
The images below give some examples of a relation and a range using a number of different sources:

The following image illustrates a **relation** between the entity **quotes** in Dynamics 365 Customer Engagement and the table **CustTable** in Finance and Operations:



The following image illustrates a range for the table **CompanyInfo**. Remember to set the Lock to **Yes**.

It is also possible to use an expression to set the value, such as setting the value for the field **DataArea** in the following image:



Ensure the **Cross company** is toggled to **Yes** in case the datasource/table is using the field **dataAreaId** from a table in Finance and Operations.

Both if used within a relation or when used for setting a range.

This image shows the field **dataAreaId** used within a relation:

Properties

Source name: Enabled: Yes First only: No **Cross company: Yes** XML structure: Join: Isolate select: No

Details

Relation: sup_dataareaid

+ New Delete Load defaults

DataSource	Parent	Child	Relation type	Default
quotes	sup_dataareaid	dataAreaId	Field to Field	<input type="checkbox"/>
quotes	sup_customfield	AccountNum	Field to Field	<input type="checkbox"/>

This image shows the field **dataAreaId** used for setting a range:

Default ranges

- ▲ quotes
- ▲ CompanyInfo
 - DataArea
- ← ▲ quotedetails
- ←☰ ▲ CustTable
 - dataAreaId**

SETTINGS

Show: No **Lock: Yes** Range: