

How to set up a printer for use as an Lاسernet input module and network printing

Ivana Dordevic - 2022-11-01 - Comments (0) - Lاسernet FAQs

Lاسernet

To generate documents in Lاسernet, data input is needed. This is generally done using either input folders or printers. This article will show you how to set up a Lاسernet input printer.

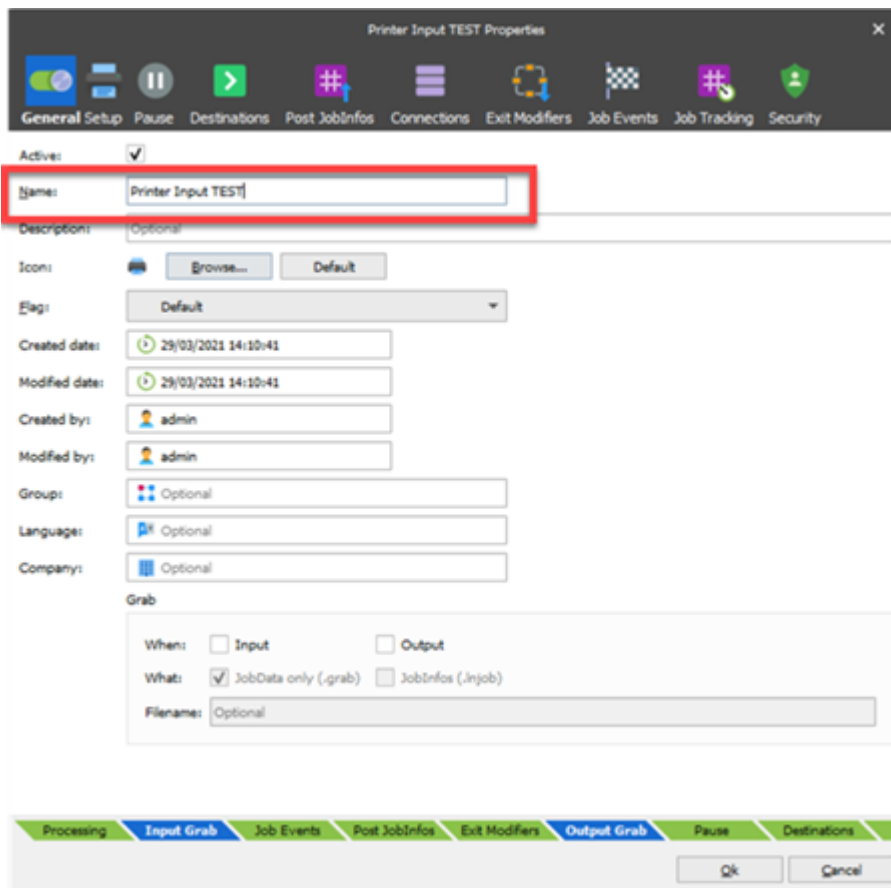
Lاسernet setup

To create a new Lاسernet Input printer, follow these steps:

1. In the Lاسernet build, click the **Modules** button in the *Tools menu* and add a **Printer Input** module. The Printer Input Properties window is displayed.
2. Select the **General** tab and in the **Name** field, set the name of the module. This name will be used when selecting the port later. All other settings on all other tabs can be left as they are at this stage.

Lاسernet automatically populates the *Printer Name* on the Printer Setup pane. This name can be altered but not left blank or the Printer port will not display on the list when creating the Printer in Windows.

3. Click **Ok**.



4. Update the Lasernet build.

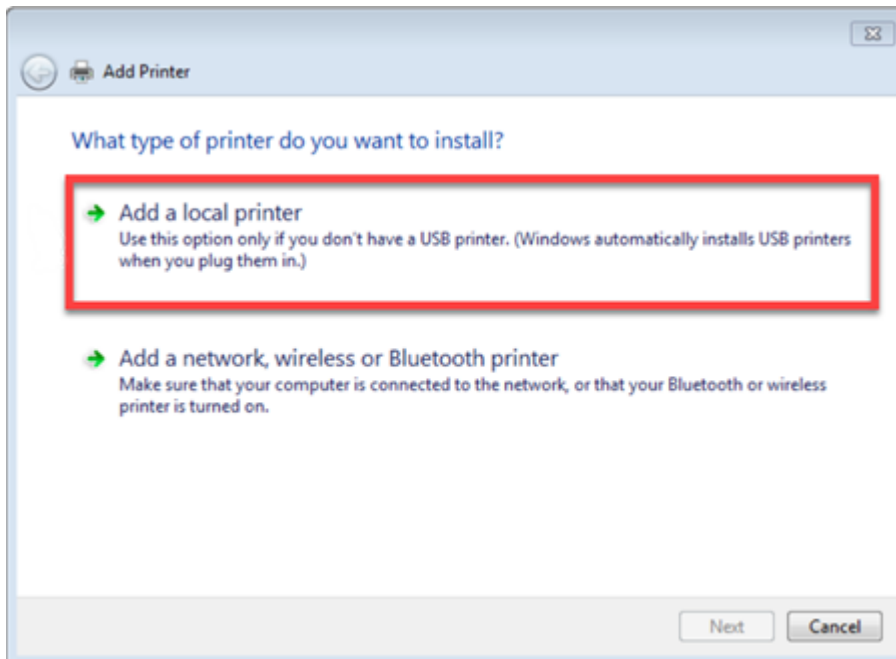
The Lasetnet service will now create a new Lasetnet Port that will be used later in the printer configuration.

Add a printer, set the names and update the build

Creating the Printer

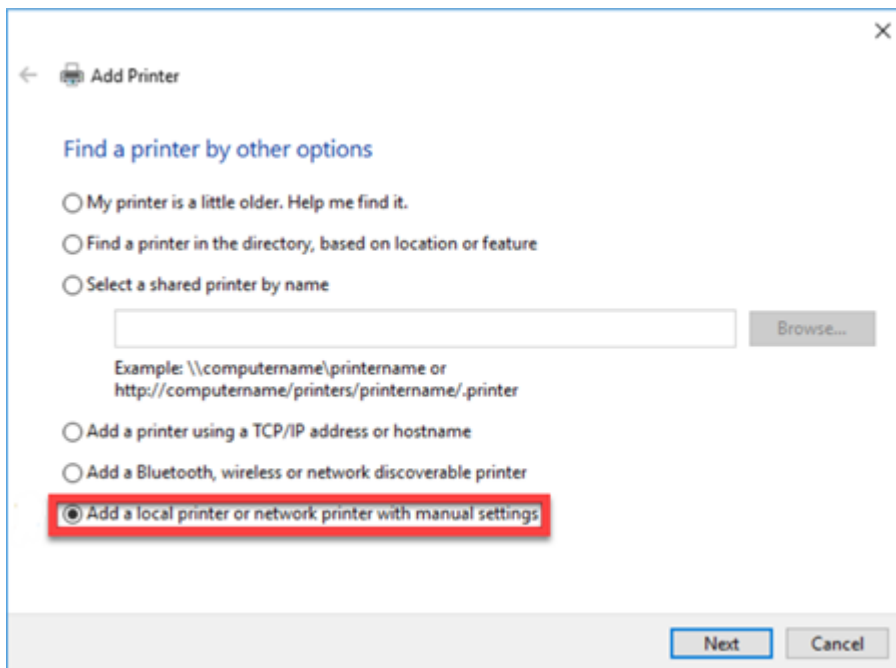
Windows Server 2008R2

1. Click the **Add a printer** button at the top left of Windows' Devices and Printers settings.
2. Select **Add a local printer**.



Windows Server 2012/2012R2 and above

1. Click the **Add a printer** button at the top left of the Windows and Devices settings.
2. Within the new window that appears, click **The Printer that I want isn't listed**.
3. Select the **Add a local printer or network printer with manual settings** radio button.

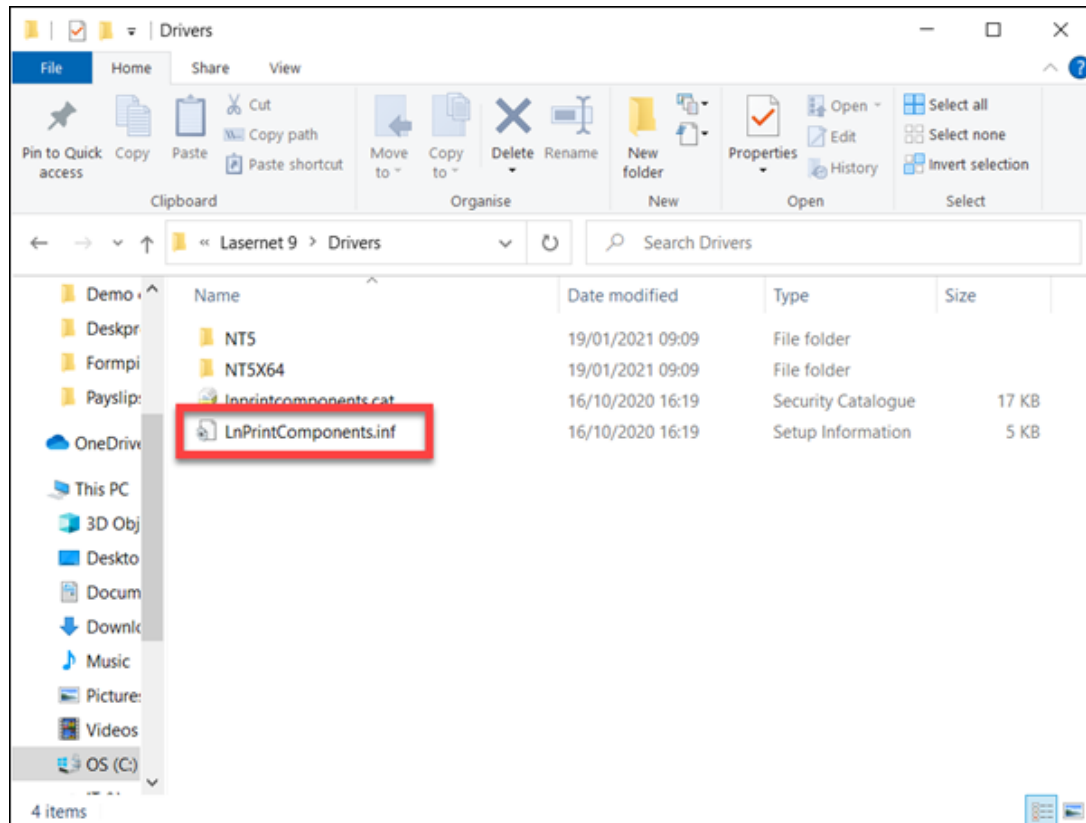


4. Under the existing port drop-down menu, select the printer port created earlier and click **Next**.

5. To install the Lasernet driver, click **Have Disk** and browse to the Lasetnet Program Files.

6. Find the *Drivers* folder and select the **LnPrintComponents.inf** file.

Lasernet 9: C:\Program Files\Formpipe Software\Lasernet 9\Drivers



Two options for two drivers will be displayed, "LaserNet EMF" and "LaserNet Text Only". The EMF driver is used for receiving images into Lasetnet (it is predominantly used for the overlay engine).

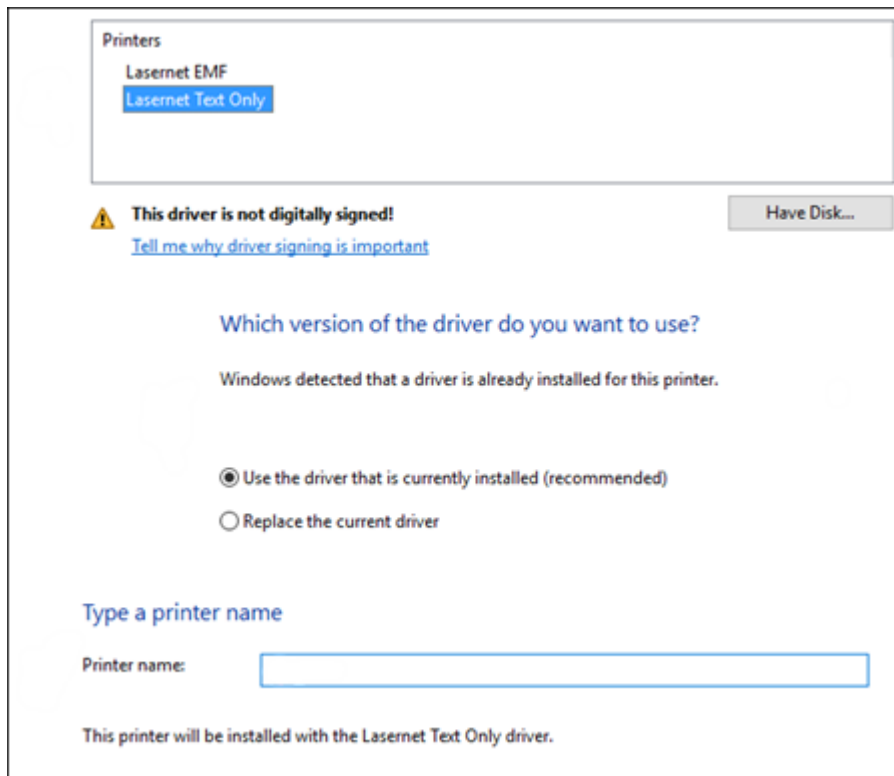
7. As we are receiving text into Lasetnet, select the **LaserNet Text Only** driver and click **Next**.

If this driver has been previously installed, a preliminary screen will appear. Select **Use the driver that is currently installed (recommended)**.

If the driver has not been previously installed, then please install it when the option appears.

If the error "Digitally Signed driver is required" appears, then you will need to disable *Driver Signature Verification* before you can proceed.

8. Set the name of the printer to the printer name used in Lasernet ('Printer Input TEST').



If this printer is being setup on a server and other networked computers will need to have access to it:

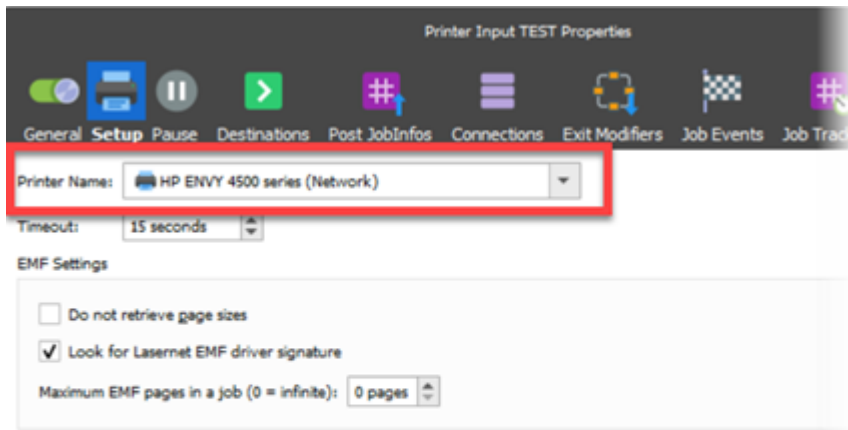
- Select **Share this printer...** to allow other computers on the network to print to it, then click **Next**.
- If this printer is not shared, then only the computer where it is installed will have access to it.

8. Click **Next** and then **Finish**. The printer will now appear in the *Devices and Printers* list.

Connecting Lasetnet input module to the printer

The next stage is connecting Lasetnet the input module to the printer. Follow these steps:

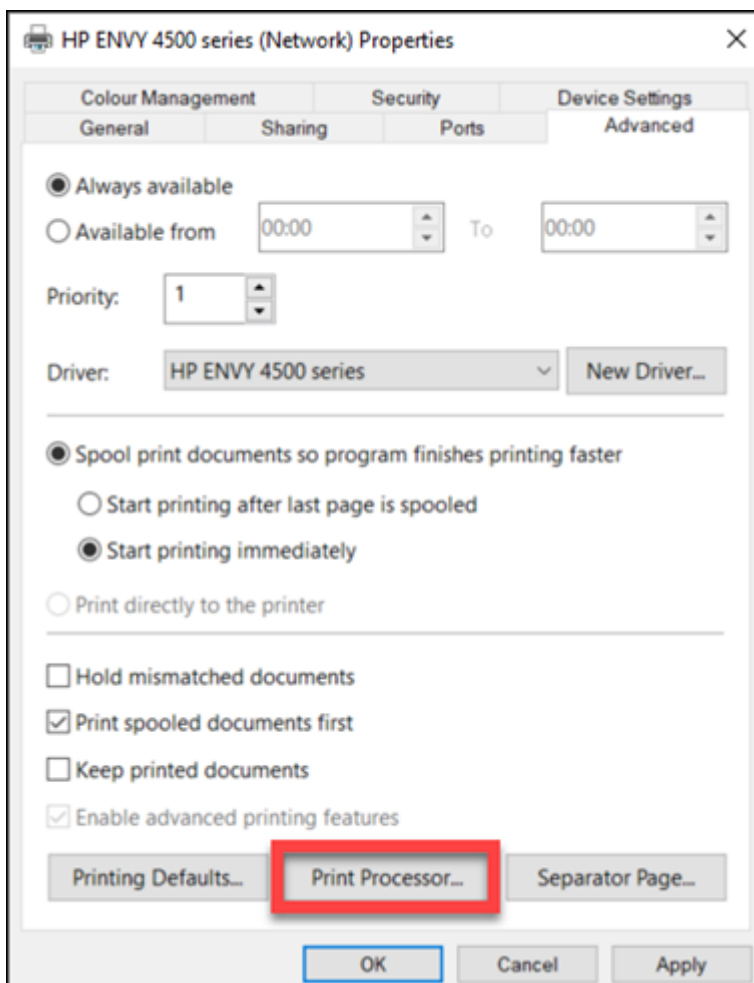
1. Open Lasetnet and then open the **Input Printer** module properties.
2. Click the **Setup** tab, and select the **Printer Name** that was just created from the drop-down list.
3. Upload the Lasetnet build to complete the configuration.



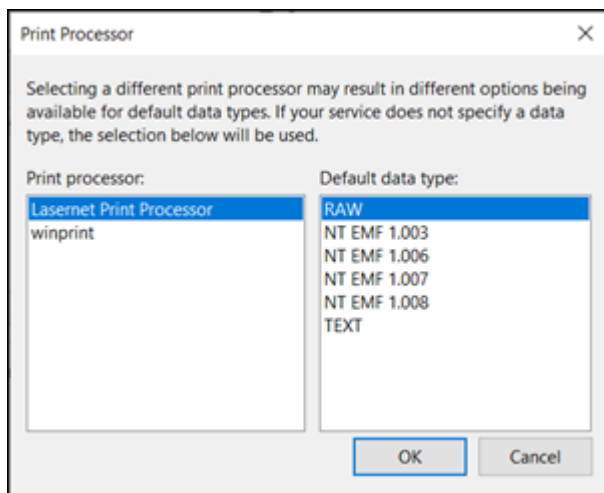
Printer Settings

Now it's time to ensure all settings are correct.

1. In the *Devices and Printers* settings, right-click the printer created previously and select **Printer Properties**.
2. Click the **Advanced** tab then select **Print Processor**.



3. Change the Print processor from “winprint” to “LaserNet Print Processor”, click **OK** and **OK** again to confirm the change.



Testing the Printer

To test if this printer is working with Lasernet, right-click on the printer in the *Devices and Printers* window, select **Printer Properties**, then click **Print Test Page**.

In LaserNet Monitor, check to see that the test document begins processing. Look for messages like “Spooling from (printer name)...” and jobinfos such as WinPrinterName, DataPrinterName and DriverName, to check that the printer is working correctly.

Creating the printer on another system

To use this Printer as an input across the network, the printer must be shared.

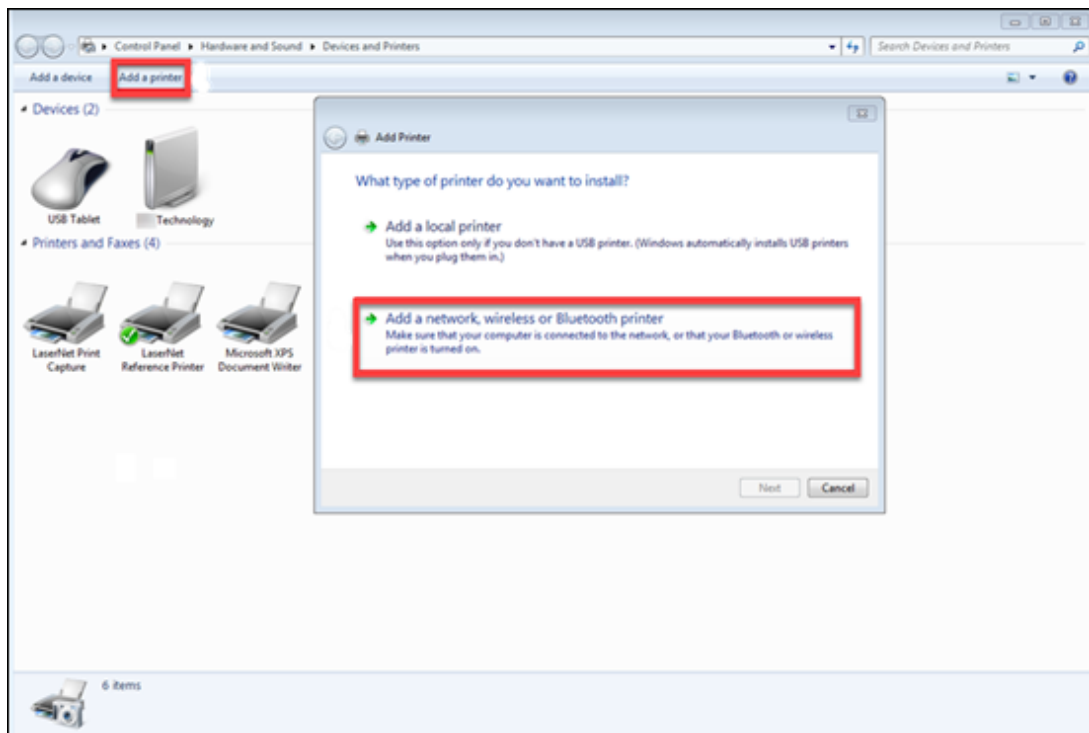
Windows Server 2012/2012R2 and above

To create this printer on another system, open *Devices and Printers* and click the **Add a Printer** button.

Windows Server 2008R2

To create this printer on another system:

1. Open *Devices and Printers* and click the **Add a Printer** button.
2. Click **Add a network, wireless or Bluetooth printer**.



Continued...

1. Click **The printer that I want isn't listed** and then select a shared printer by name.
2. Either browse or type in the network location of the printer you have just added.
A message stating "You've successfully added [printer name]" will appear.
3. Click **Next**.
4. To set this printer as a default print select the checkbox and click **Finish**.