

## How to prevent printing ligatures in Lاسernet?

Ivana Dordevic - 2021-04-01 - Comments (0) - Lاسernet FAQs

# Lاسernet

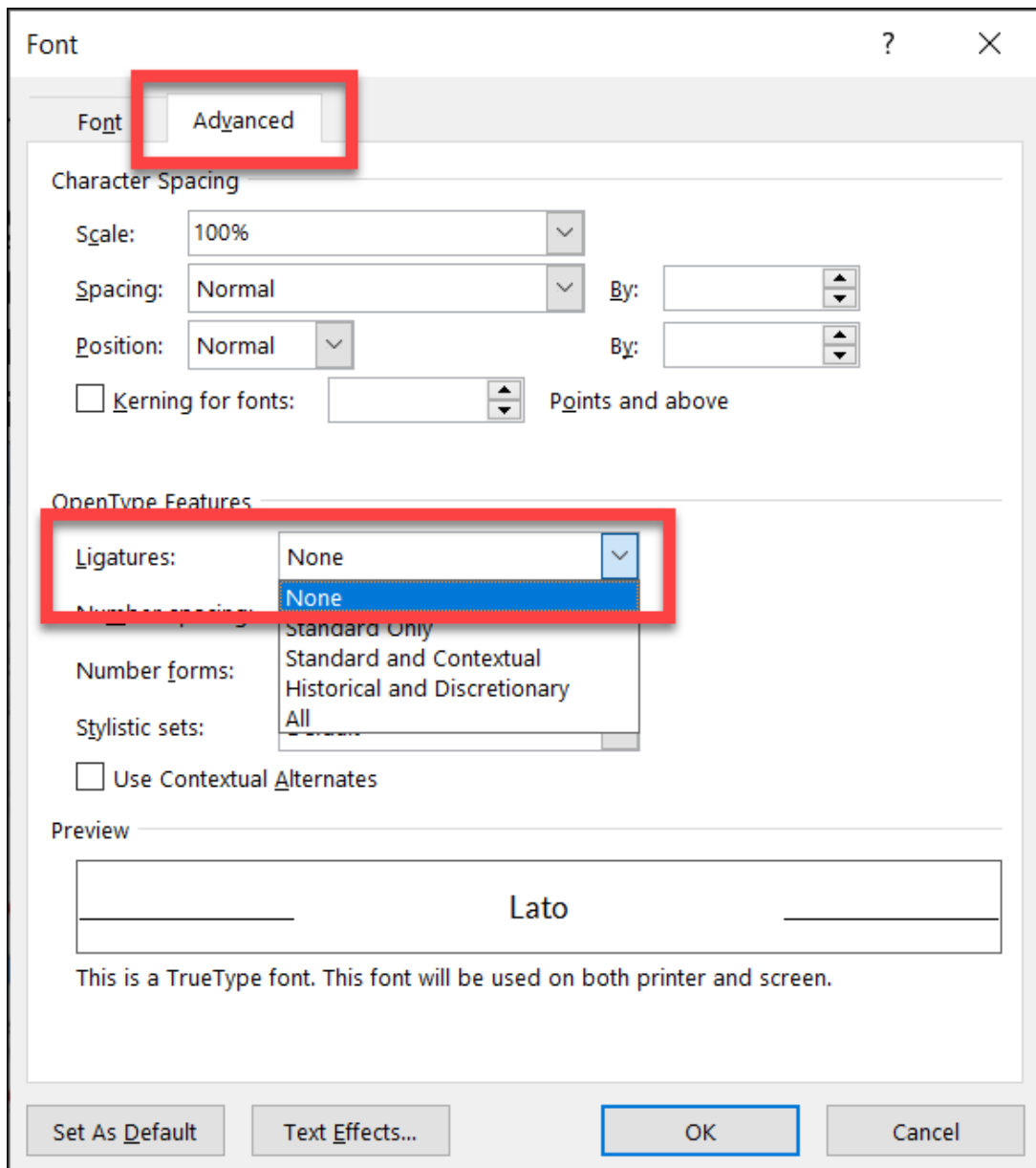
Occasionally when printing to the Lاسernet Print Capture, strange characters will appear in the generated overlays. This is called a *ligature*. A ligature occurs when two or more letters are joined together as a single glyph (character/symbol):



To resolve this, the software which prints to the Lاسernet Print Capture printer must have its ligature option set to *disabled*. Follow these steps for Microsoft Word and Microsoft Publisher:

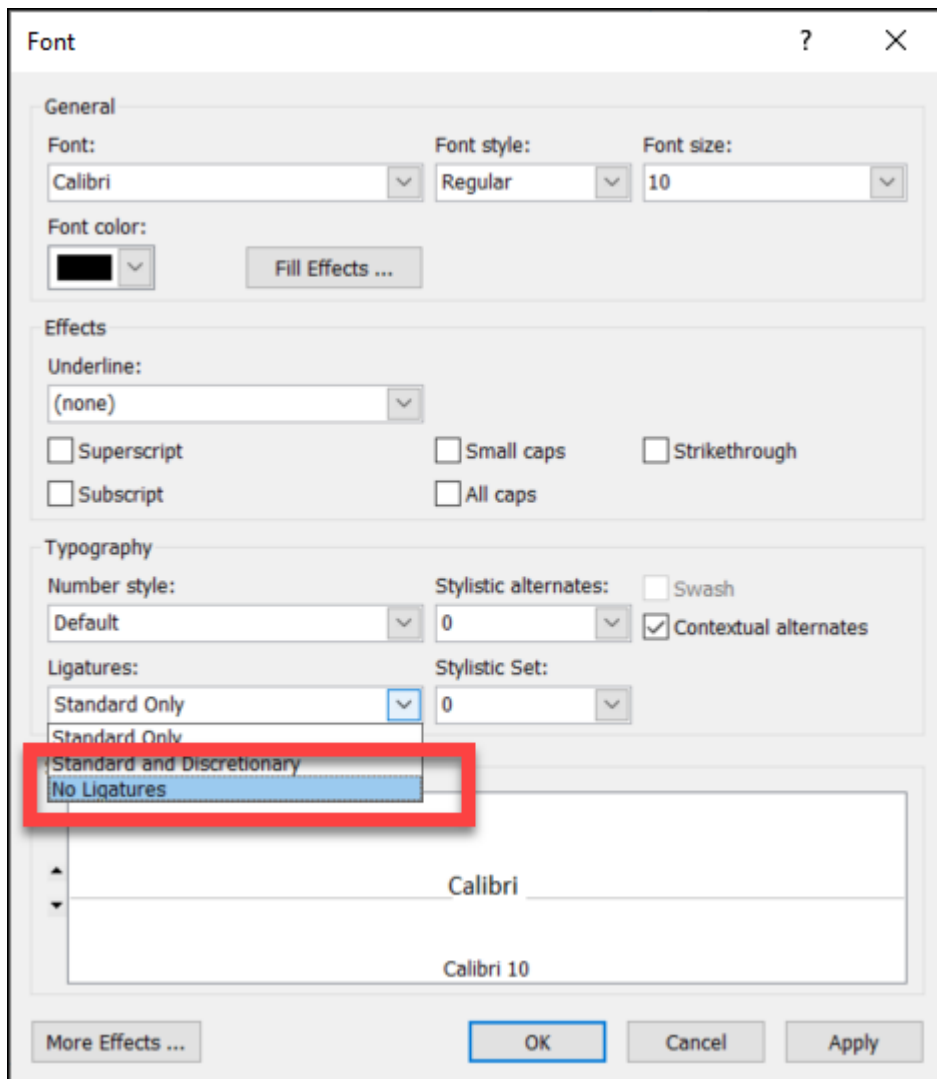
### Microsoft Word

1. Press **Ctrl+D** and click the **Advanced** tab.
2. Click the dropdown options next to Ligatures and select **None**.



### Microsoft Publisher

1. Click the arrow in the font pane to open the *Font* box
2. Click the dropdown options next to Ligatures and select **No Ligatures**.



### Alternative solution

As fonts are designed to display specific ligatures, to prevent ligatures from being produced, use a different font.