

How to connect to a PostgreSQL database in Lاسernet

Mikael Wängelin - 2021-08-25 - Comments (0) - Lاسernet General Information

Lاسernet

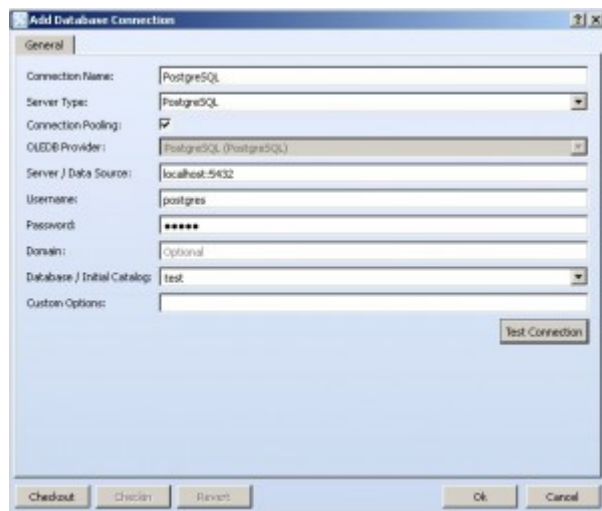
Lاسernet 6.7 or above needs to have an external driver to use a **PostgreSQL** database connection. Follow these steps:

1. Find the `libpq.dll` and `libintl-8.dll` files from inside the *PostgreSQL* installation folder.
2. This file then needs to be placed into the main installation folder of Lاسernet.
3. After copying, restart the Lاسernet service and reopen the Lاسernet Developer.

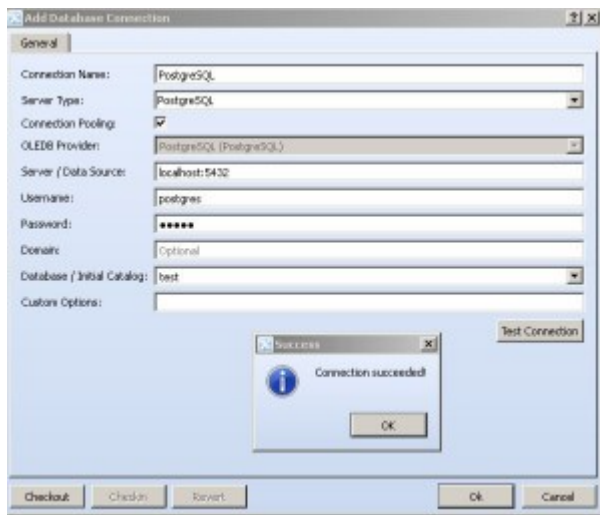
64-bit Lاسernet 6.7 and above requires 64-bit drivers.

4. Define the PostgreSQL path in Environment Variables: `%PGR00T%\bin`.

5. To get a connection with PostgreSQL installed on the same server as Lاسernet, the fields below need to be set:



6. Click the **Test Connection** button to verify the setting. If every field is correct then you will have the message "Connection succeeded!" as below:



This connection can be saved and then referenced in Database Commands.