

## How do I change the colour of objects within a Lاسernet form?

Ross Glover - 2021-08-25 - Comments (0) - Lاسernet FAQs

# Lاسernet

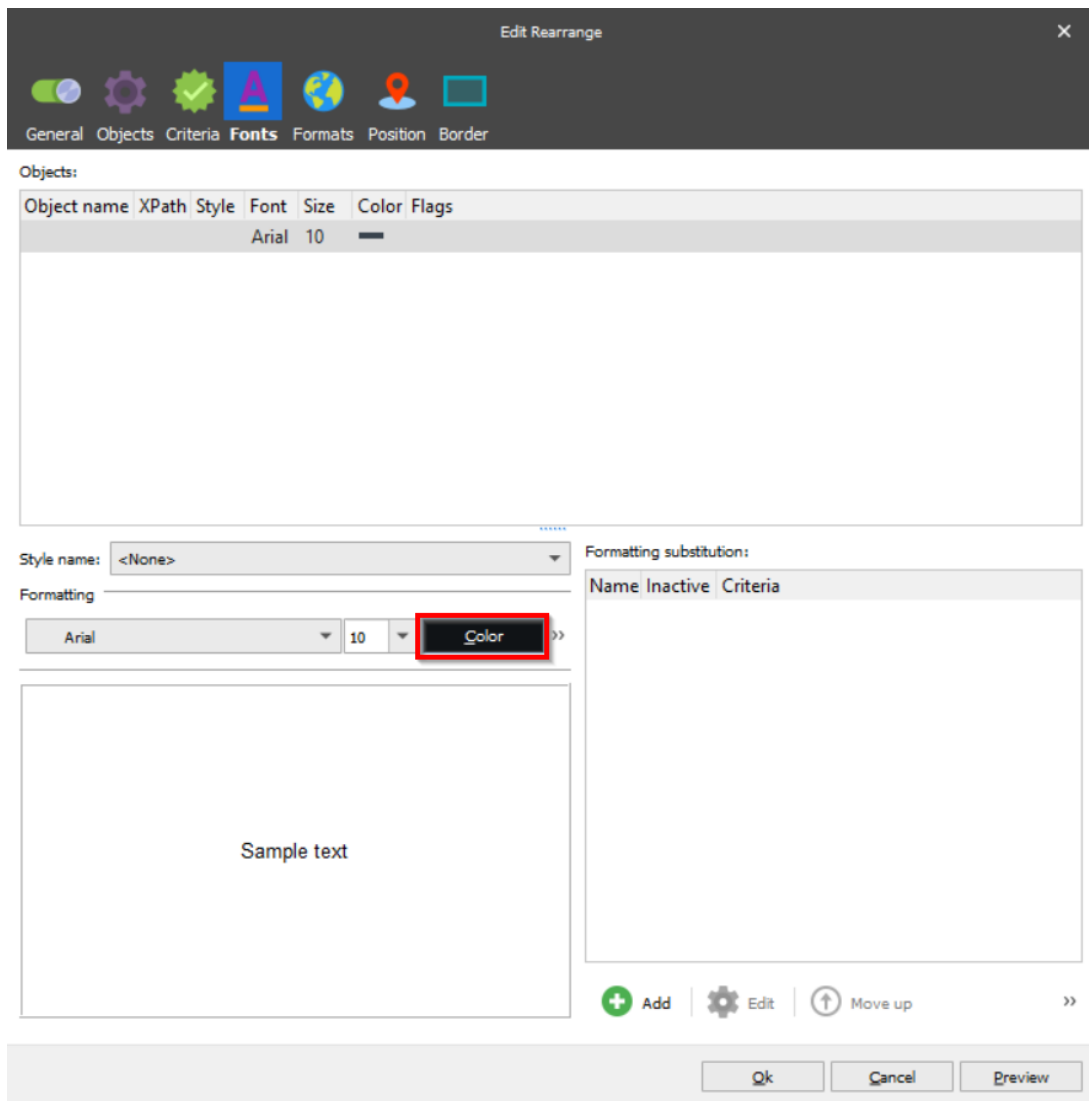
Lاسernet has a number of different methods of changing the colour of objects in the Forms Editor.

### **Amending the font colour**

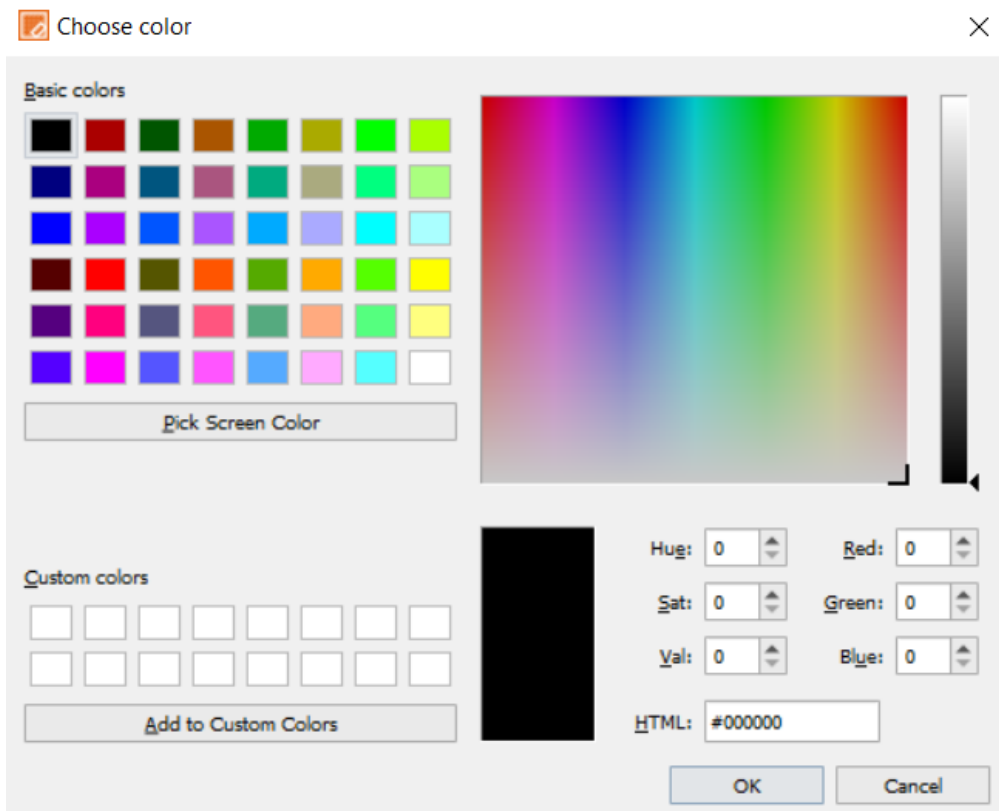
The text colour in rearranges and text boxes can be easily changed in the text box properties.

To change the text colour, follow these steps:

1. Double-click the text to open the object properties window and click the **Font** tab.
2. Click the **Color** button.



Another window will appear which allows you to customise the text colour.



### Default colours in Lasernet

Lasernet uses five default colours, red, green, blue, white and black. However, HEX colour codes can be used to allow for a greater range of colours. For example, a light orange using the hex code #fadda2.

### Adding a border and/or background to text

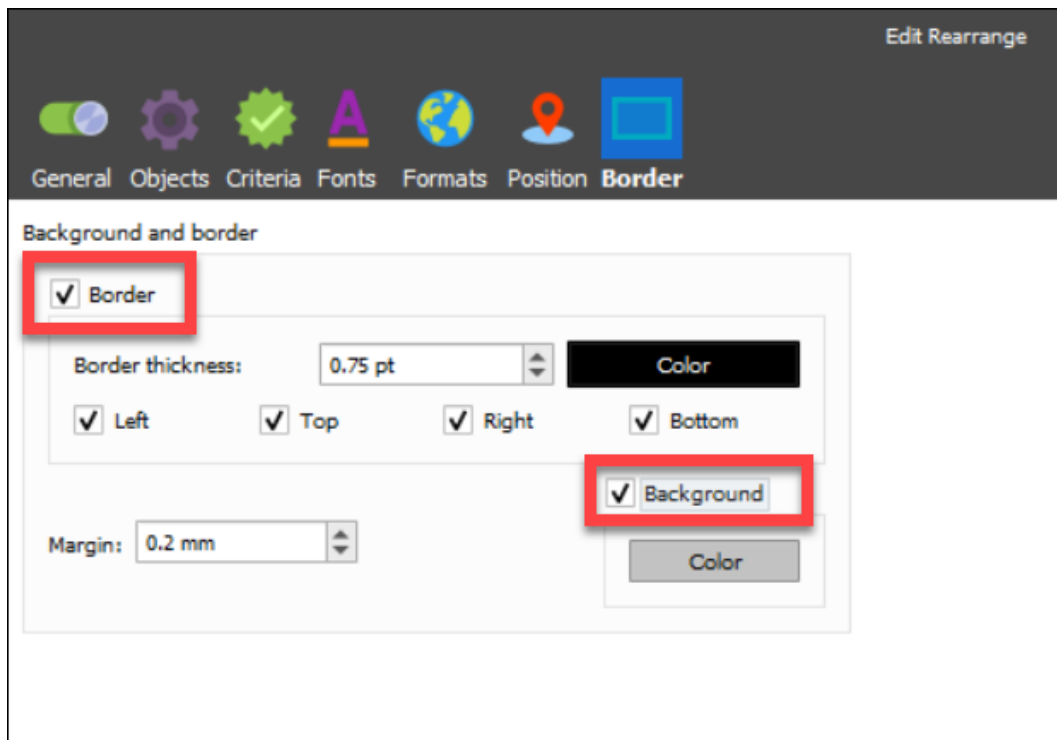
Within the Border tab, there is a Background and Border section. To add a border and/or background, follow these steps:

1. Click the **Border** tab.

There are two checkboxes:

**Border:** for setting the border colour, the thickness of the line, the margin and on what sides of the rearrange the line will appear

**Background:** to select and enable the background colour for the text.



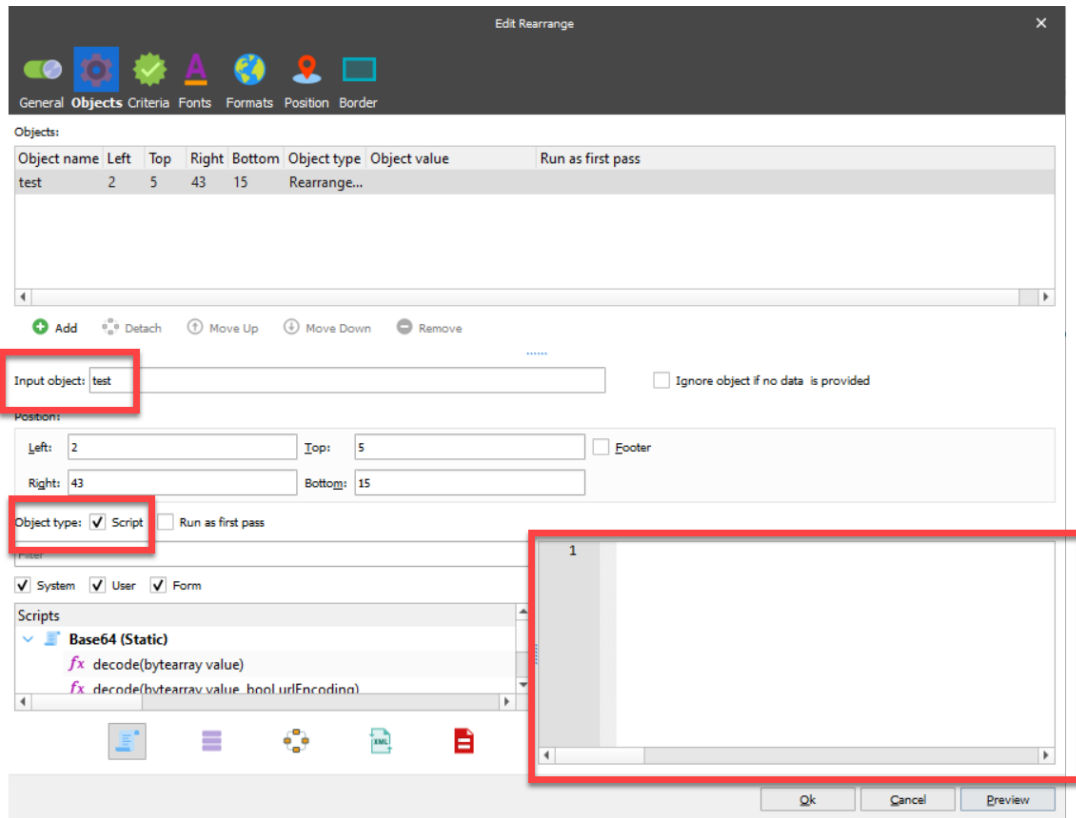
2. Edit the border *thickness*, the *location*, its *margin* and *background* colour.

3. Once you are happy with the settings, click the **Ok** button.

### **Amending the colour of a Rearrange via scripting**

To alter the colour of a rearrange, follow these steps:

1. Double-click on the rearrange, click the **Objects** tab and enter an **Input object** name in the text box.
2. Select the **Script** checkbox which activates the text box in the bottom right-hand corner where the script text can be written.



Example scripts for a rearrange

```
//To set the text colour (To use hex replace red with the hex code
i.e. 0xFF0000 is red).
CurrentRearrange.color = red;
//To set the background colour.
CurrentOutputRearrange.backgroundColor = blue;
//To set the text box border colour.
CurrentOutputRearrange.borderColor = red;
```

Scripts

```
//Returns the data back into the rearrange with the above changes
CurrentRearrange.text;
```

### Using the Shape tool (Lasernet v7+)

From Lasernet version 7 you can create Lines, Rectangles and Rounded Rectangles using the *Shape* tool. There are two different ways of amending the colour for this:

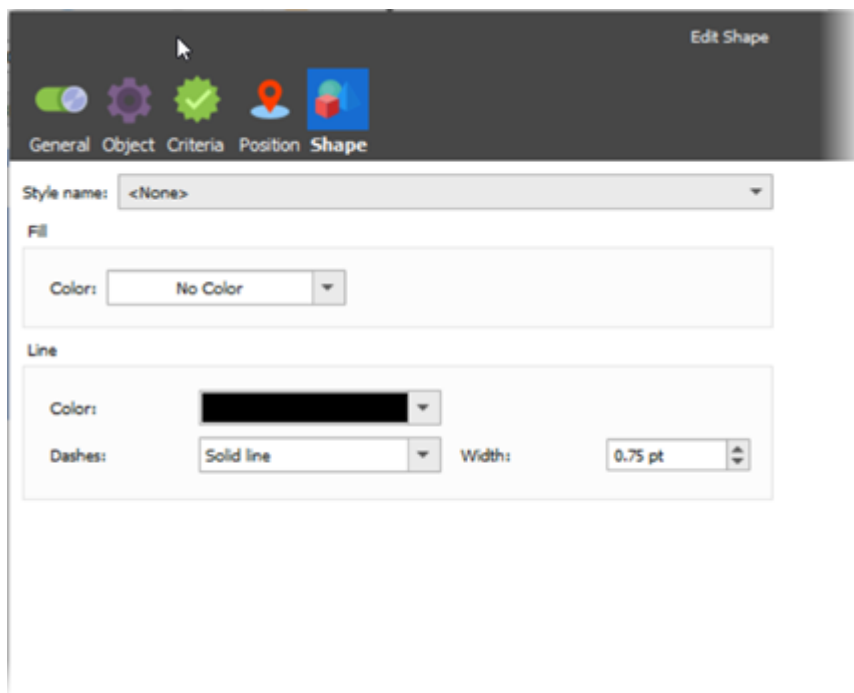
- Using the properties via the Shape tool.
- Using scripts.

Each approach has a different method for changing the colour.

If text disappears when setting the background colour of a shape, it is because the shape layer is in front of the data. To rectify this, right-click on the shape and a menu will appear. Go to the **Order** section and click **Send to back**. This will now send the shape to the back of the form and the data will become visible again.

#### Using the properties via the Shape tool

The method is identical to changing the colour in a rearrange. Double-click on the shape to bring up its properties. Using the two sections: Fill and Line, you can change the relevant information for the shape.



#### Using the scripts via the Shape tool - Individual Shapes

If you are using the shape tool to create an individual shape, scripting must be enabled and an input object name must be added:

Scripts

```
//Sets the border colour of a rectangle or colour of the line.  
CurrentOutputRearrange.color = red;  
//Sets the background colour.  
CurrentOutputRearrange.backgroundColor = blue;
```

You can also reference a rearrange shape from another or if you do not want to use CurrentOutputRearrange, there is another method to change the colours. This time you

must provide an Output Object name only, in the example scripts below, 'EFS', is used as the object name.

Scripts

```
//Sets the border colour of a rectangle or colour of the line.  
EFS[0].color = red;  
//Sets the background colour.  
EFS[0].backgroundColor = blue;
```

### **Shapes in a pattern**

Using the shape tool on a pattern means that the number of shapes will change dynamically depending on the input. These can be coloured with more complex scripts. Scripting needs to be enabled, using the checkbox, and also requires an output object name. This can be entered on the Output tab of the shape properties. In the example scripts below, 'EFS', is used as the object name.

Line colouring

```
//Sets the line colour to red.  
EFS[Line].color = red;
```

Rectangle colouring

```
//Sets the background colour.  
EFS[Line].backgroundColor = red;
```

Rounded rectangle colouring

```
//Sets the border colour.  
EFS[Line].borderColor = red;  
//Sets the background colour.  
EFS[Line].backgroundColor = blue;
```

Complex Scripts An example of a more complex script to colour shapes or text can be seen below:

Script

```
//Colours all even lines of a shape rearrange on a pattern, blue.  
if(Line % 2){  
EFS[Line].backgroundColor = blue;
```

```
}
```

Script

```
//Colours all odd lines in a shape rearrange, red.  
if(Line % 2 == 0){  
EFS[Line].backgroundColor = red;  
}
```

the above being used together:

Scripts combined

```
if(Line % 2){  
//Colours all even lines of a shape rearrange, blue.  
EFS[Line].backgroundColor = blue;  
}  
else{  
//Colours all odd lines in a shape rearrange, red.  
EFS[Line].backgroundColor = red;  
}
```