

Step 2: Create a Migration Schema

- 2024-05-08 - Comments (0) - Migration

Lasernet for Dynamics 365

To be able to migrate the configuration from one environment to another we are required to create a schema that tells the migration tool which entities to export and import.

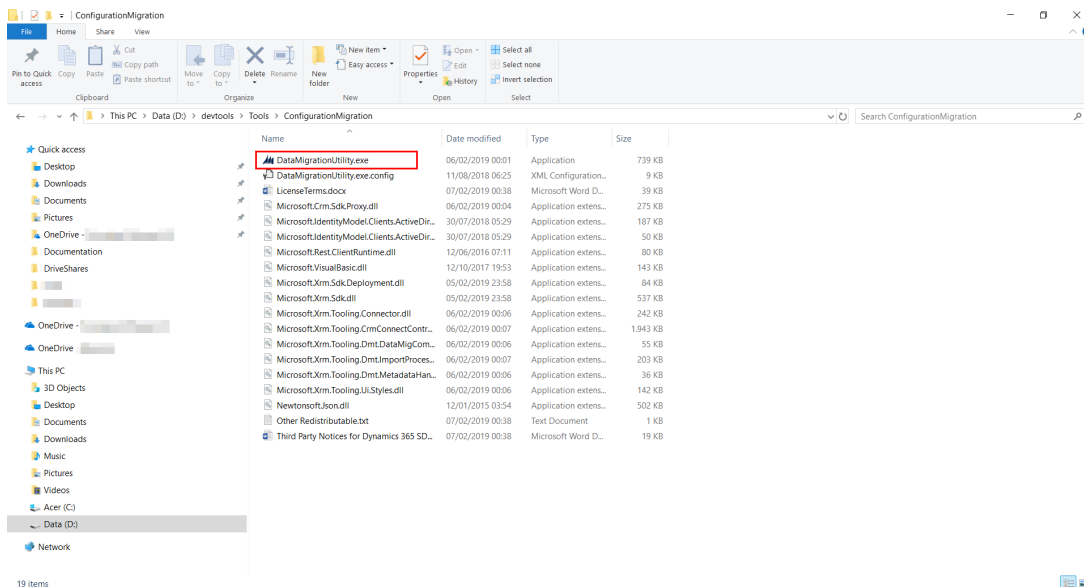
Prerequisites

To be able to execute the steps required in this article the following is required:

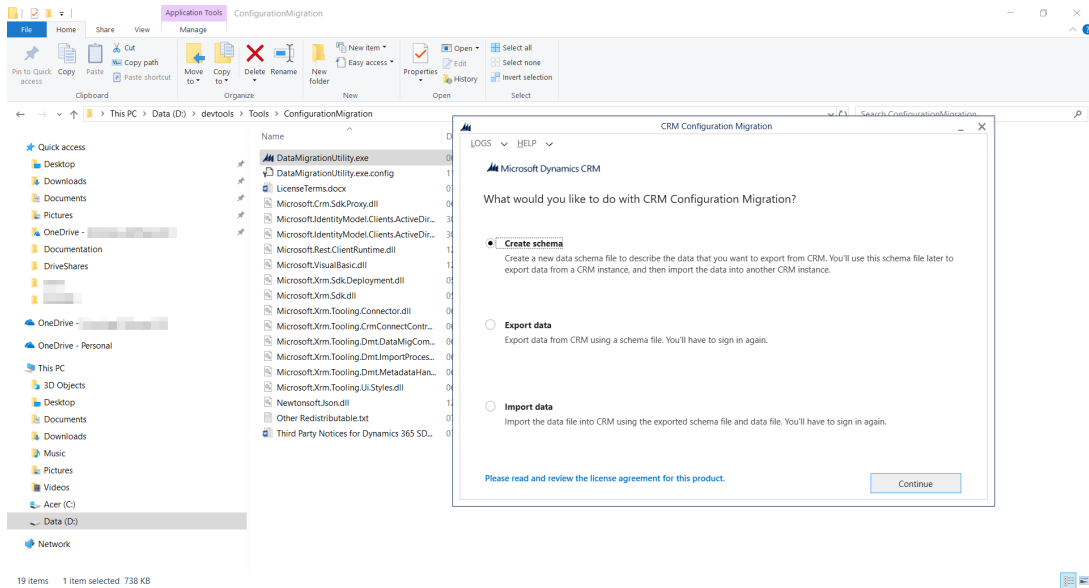
- Migration tool for importing and exporting data from and to environments.

Steps

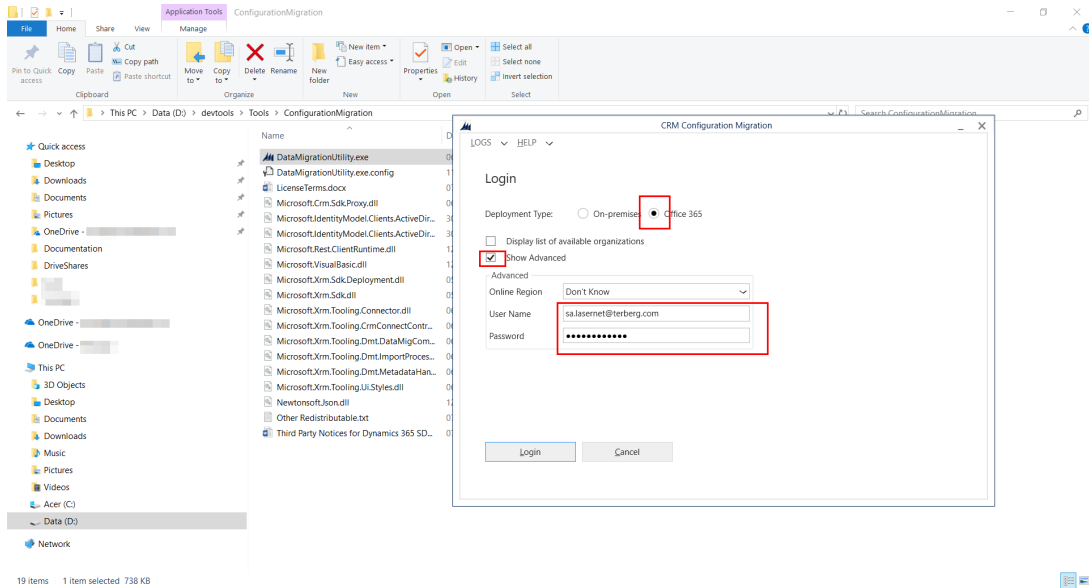
1. Open the folder where you previously stored the Data Migration Tool and open the executable.



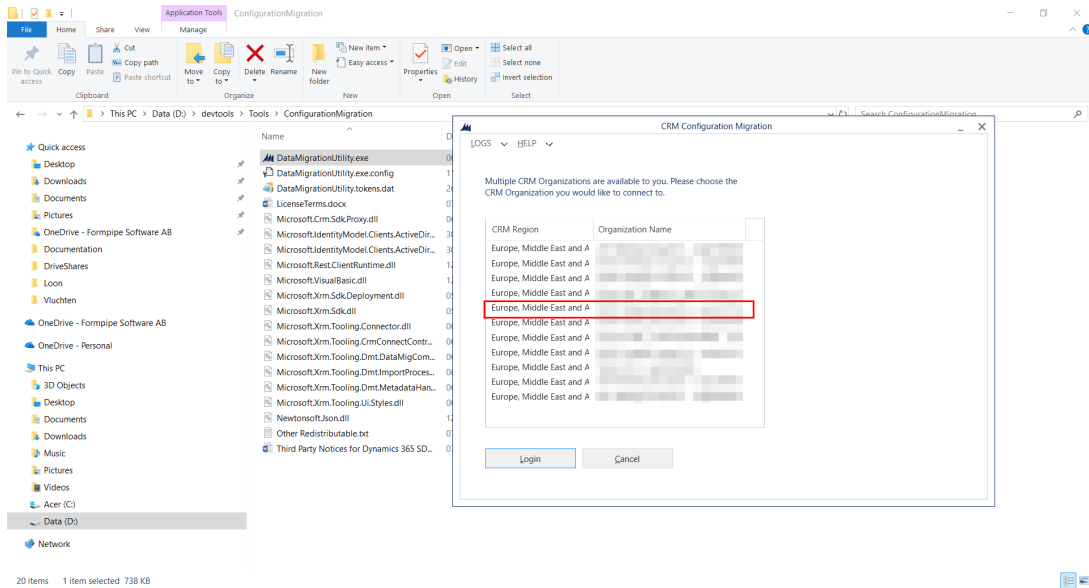
2. Select **Create schema** and press **Continue**.



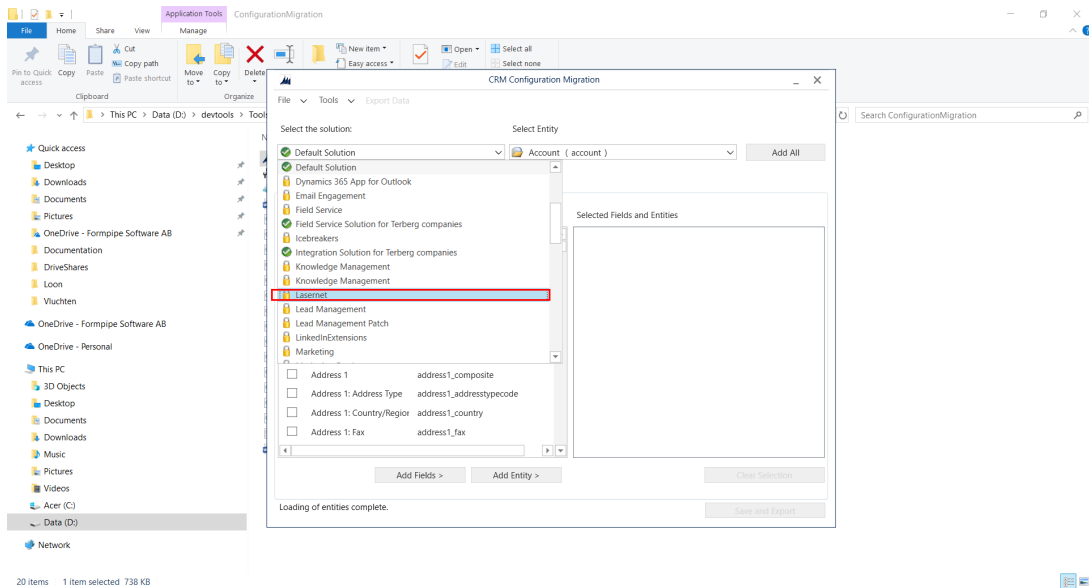
3. Select **Office 365** and **Advanced** and provide the required login information. Afterward, select **Login**.



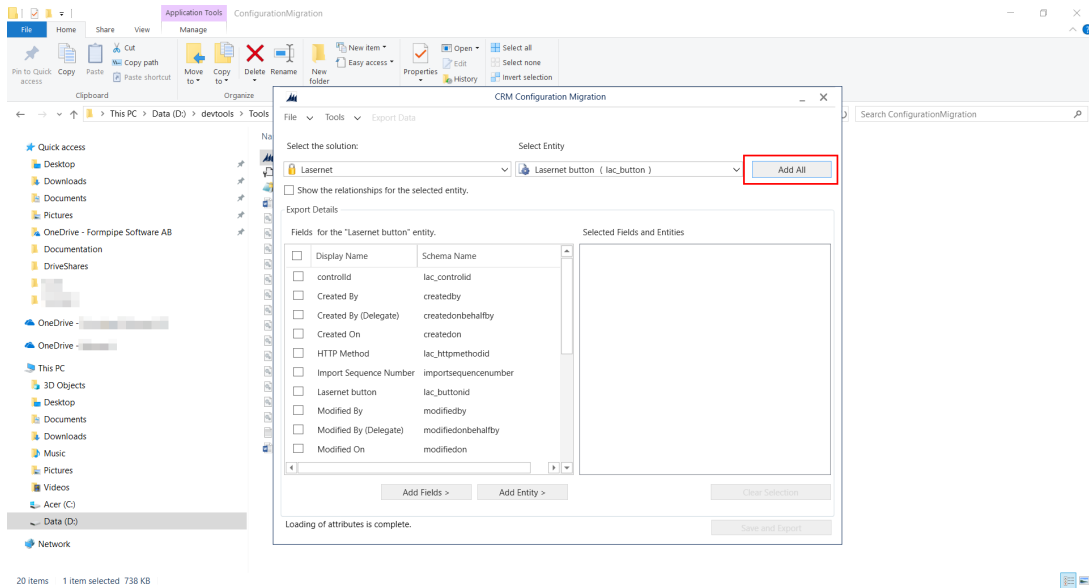
4. Select the organization where the Lasernet connector is installed and press **Login**.



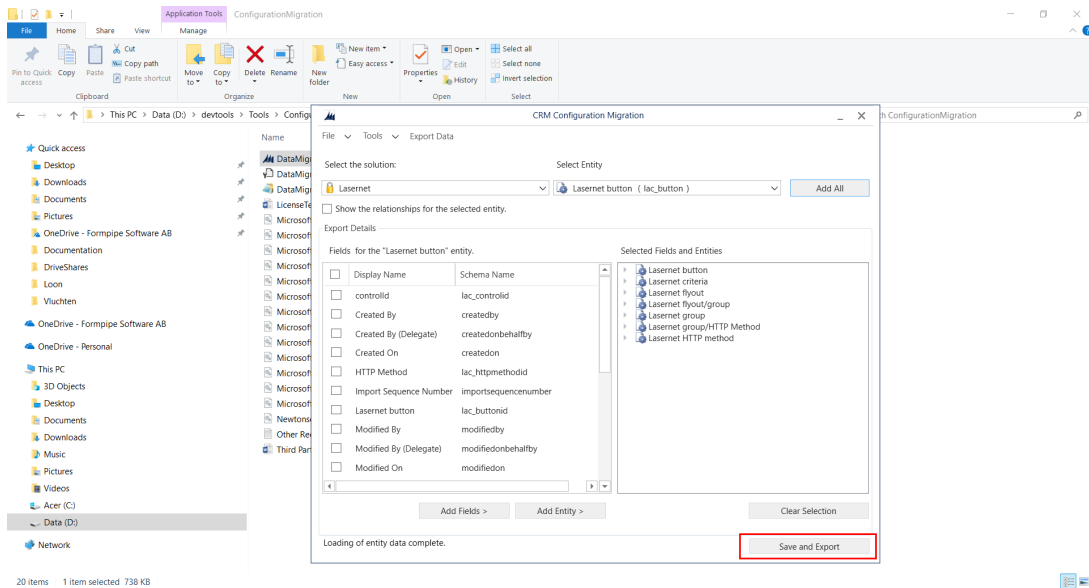
5. Select **Lasernet** in the drop-down under **Select the solution**.



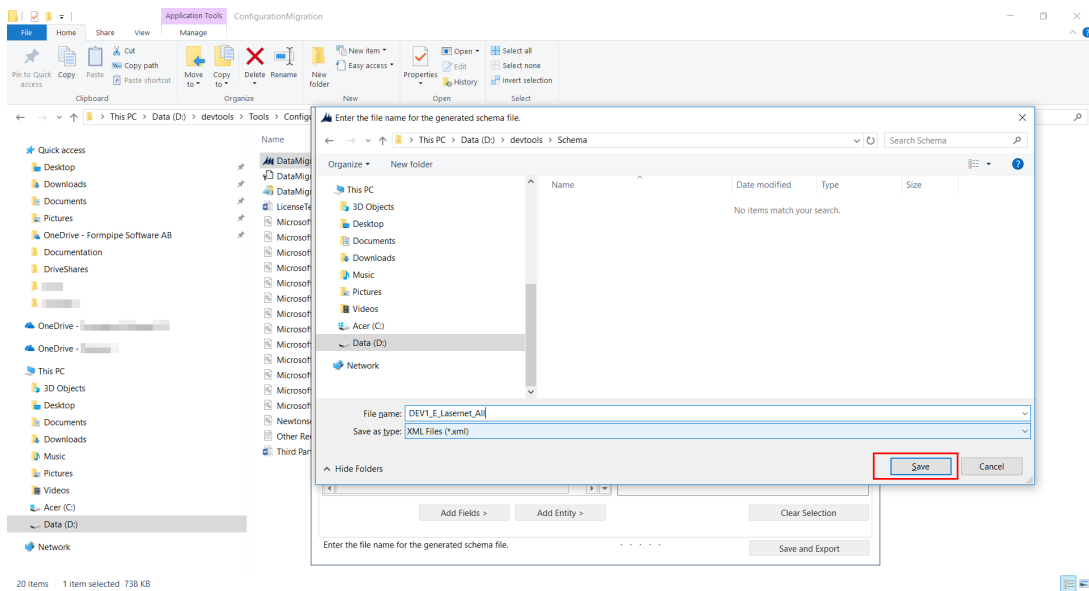
6. Select **Add All**.



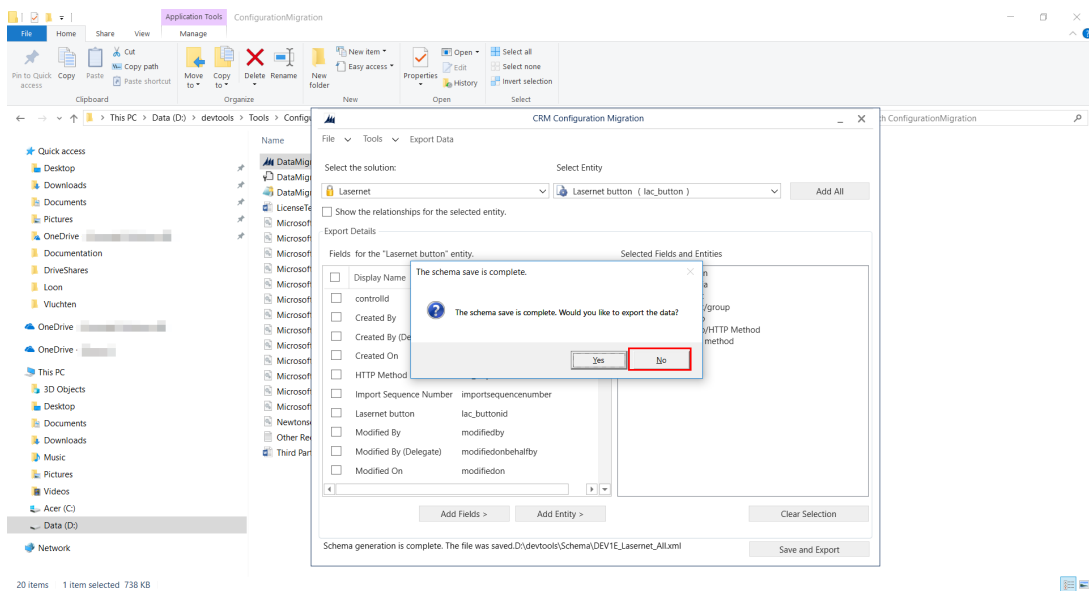
7. Select **Save and Export**.



8. Provide a storage location and name and click **Save**.



9. Select **No** when asked to export data and close the application.



Related Content

- [Step 3: Export Configuration Data](#)
- [Step 1: Acquire the Migration Tool](#)